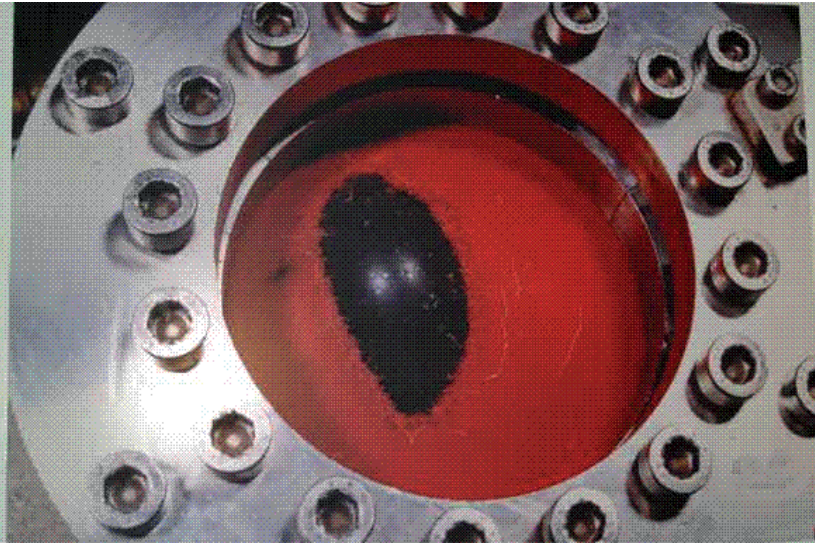




### PART 3

#### TEST METHOD FOR DETERMINATION OF BURST STRENGTH

An adaptation of a long-established international test method. A circular test specimen is cut from a garment and securely mounted in a cylinder. Below the specimen is a flexible membrane behind which water is pumped. The membrane distends, placing increasing pressure on the test specimen until, eventually, it fails. The water pressure at the point of failure is recorded. This method can be used to test samples of whole materials, seams or zip insertions and lining fabrics. The minimum burst pressures across the zones are specified in Part 1. Picture 4 shows a leather test specimen at the point of failure. Picture 5 shows the apparatus and a seam specimen after testing.



Picture 5 (left): Leather test specimen at point of failure.



Picture 6 (right): Apparatus and seam specimen after testing.